



OENOLOGICAL ELECTROPUMPS

---

## **Operation and Maintenance Manual**

### **Interchangeable Equipment for Peristaltic Pump HOPPER**



**VIA STAZIONE n. 18**

**12058 SANTO STEFANO BELBO (ITALY)**

**TEL. 0141 - 84.41.29**

**TELEFAX 0141 - 84.32.11**

**[info@revellogiovanni.com](mailto:info@revellogiovanni.com)**

**[www.revellogiovanni.com](http://www.revellogiovanni.com)**



## OENOLOGICAL ELECTROPUMPS

---

PRESENTATION.....	1
SUMMARY .....	3
<b>CHAPTER ONE</b>	
GENERAL GUIDANCE .....	4
GENERAL SAFETY NORMS .....	5
SAFETY NORMS FOR MAINTENANCE.....	6
SAFETY CONTROLS.....	8
MECHANICAL SAFETY GUARDS .....	9
ATTENTION AND DANGER SIGNALS.....	10
<b>CHAPTER TWO</b>	
IDENTIFICATION OF THE MACHINE .....	11
<b>CHAPTER THREE</b>	
INFORMATION .....	13
<b>CHAPTER FOUR</b>	
DESCRIPTION AND TECHNICAL CHARACTERISTICS .....	16
<b>CHAPTER FIVE</b>	
DISPLACEMENT, TRANSPORT, INSTALLATION .....	19
<b>CHAPTER SIX</b>	
USE OF THE MACHINE .....	23
<b>CHAPTER SEVEN</b>	
PERIODIC INSPECTIONS AND MAINTENANCE .....	27



*OENOLOGICAL ELECTROPUMPS*

---

***CHAPTER ONE***  
***GENERAL GUIDANCE***



## OENOLOGICAL ELECTROPUMPS

---

Thank you for preferring our products; **"G. REVELLO"** is pleased to welcome you among its customers and wishes that you will be fully satisfied with the use of this machine manufactured with the important background in this sector. In fact, firm **"G. REVELLO"** has been manufacturing pumps since 1890, an experience handed over from father to son and always aimed at technological improvement following the guideline that a tool or equipment used to work must be essentially evaluated for its technical features giving the machine versatility and guaranteeing its durability.

This "OPERATION MANUAL" has been issued to enable to work with complete knowledge of the safety, operation, and maintenance norms.

### ADVICE

To attain good efficiency, long life and satisfactory performance of the machine, WE RECOMMEND reading the instructions contained in this manual attentively and performing scrupulously all operations described, i.e. storage, handling, installation, start-up, use, and maintenance.

**BEFORE USING THE EQUIPMENT, IT IS ESSENTIAL THAT THE OPERATORS OF THE MACHINE have sufficient knowledge of the SAFETY NORMS of this manual.**

### ATTENTION:

The hopper can be used exclusively if fixed and connected to a G.REVELLO peristaltic pump controlling also its operation. The present manual is integral part of the hopper and accompanies it till its scrapping. This manual, referring to a HOPPER in standard version, but not covering all details and possible variations of its design, must be kept available for quick access during operation of the machine.

The technical characteristics, the data, and tables of this manual, are and remain the exclusive property of **"G. REVELLO"**.

Their reproduction and disclosure, even when only partial, to third parties are forbidden and will be prosecuted.

**"G. REVELLO" declines any responsibility in case of inconveniences, breakages, accidents, etc. due to the ignorance of, or failure to observe, the instructions and norms contained in this manual.**

Additionally, the firm declines any responsibility for problems caused by:

- ◆ Execution of variations, modifications and/or installation of accessories without our authorisation
- ◆ Lack of maintenance
- ◆ Wrong manoeuvres
- ◆ Damages to the electrical system
- ◆ Environmental factors

### RESERVE

The descriptions and the pictures of this manual are NOT BINDING.

**"G. REVELLO"** reserves the right to make modifications to the pump at any moment to obtain aesthetic, commercial, and functional improvement (while maintaining the essential characteristic), without committing itself to update this manual immediately.

**Use exclusively ORIGINAL SPARE PARTS**



## OENOLOGICAL ELECTROPUMPS

Do not wait for the components to be worn by use; perform their substitution at the right moment, to obtain better operation of the machine and lower working costs, since greater damages can be avoided.

### NOTES:

- ◆ In case the customer did not find required information in this manual, contact our after-sales service.
- ◆ In event of doubts about the suitability of the hopper, it is advisable to contact the TECHNICAL SERVICE OF G. REVELLO.



When referring to a hazard, the safety norms in this manual are recognizable through the symbol:

### ATTENTION:

Besides the norms listed below, the chief operator responsible for the correct operation of the machine must observe the provisions of the law in force about the safety and health of personnel in the workplace as well as all general provisions of the law and the safety norms concerning the plant or production line where the hopper is inserted.

The chief operator of the machine must know the safety devices installed on it and its modes of use; in addition, he/she must instruct other operators about the following:

- ◆ Safety norms and accident prevention
- ◆ Specific norms concerning the machine
- ◆ Position of the controls

The chief operator of the machine designates other operators, details their permissible operations, and the limits of their intervention for maintenance or repairs.

Only designated operators shall be allowed to work with the equipment.

### ATTENTION:

Always follow the safety norms and the instructions of this manual. **G. REVELLO** declines any responsibility for damages due to the improper use of the hopper.

**THE TRANSPORT, THE DISCHARGE AND THE ASSEMBLY OF THE EQUIPMENT MUST BE PERFORMED ONLY BY AUTHORIZED AND SPECIALIZED PERSONNEL.**

**THE FEED TENSION MUST CORRESPOND TO THE VALUE REQUIRED**

Pay attention not to invert the phases.

**THE ELECTRICAL FEED SYSTEM MUST BE INSTALLED IN COMPLIANCE WITH THE NORMS IN FORCE**

Later on, perform periodic inspections to be sure that the feed cable is in perfect condition.



### ATTENTION DANGER:

**DO NOT ALLOW PEOPLE UNFAMILIAR WITH THE MACHINE TO APPROACH THE MACHINE.** The use, maintenance, inspections, and repairs of the machine must be performed only by authorised operators. Said operators must be physically and intellectually suitable people, not under the effect of alcohol, drugs, medicines or psychotropic drugs.

### ATTENTION:

when it does not work, the hopper must be protected by unwanted movements.

Disconnect the power when the machine is not in use



## OENOLOGICAL ELECTROPUMPS

---

**ATTENTION DANGER:** 

Hoppers are machines with dangerous parts since put under voltage and with driving parts; therefore:

- Improper use
- The removal of the safety guards and/or disconnection of the safety devices
- The lack of inspections and maintenance

**CAN CAUSE SEVERE DAMAGES TO PEOPLE OR THINGS**

Since the hopper is to be installed in a plant, the person performing the installation is responsible for its general safety and therefore has to implement all necessary additional safety devices and measures.

Before starting the machine, **CHECK** if there are any visible defects to the safety devices.

**MAKE SURE THAT:**

- ◆ Individuals unfamiliar with the machine are not near the machine.
- ◆ There are no foreign objects (tools, rags, etc.) on the hopper.
- ◆ After starting, the machine does not emit anomalous noise. In that case, stop it immediately and find its cause.
- ◆ All doors and safety panels have been properly closed

**DO NOT USE**

- ◆ Loose clothing that could be caught in by moving parts {scarves, wrist watches, bracelets, rings, etc.)

**USE:**

- ◆ Operators with long hair must wear hair net or hat/cap.
- ◆ Shoes with anti-slip soles.
- ◆ Other PPE material.

**ATTENTION DANGER:** 

When the machine is working, it is strictly forbidden to deactivate the safety and accident-prevention devices.

**ATTENTION:**

At the shift change the operator must inform the person who relieves him/her or his/her superior of any operation and/or safety defects, even if they did not cause the machine to stop.

**ATTENTION:**

Do not attempt repair/service or interfere with the machine while it is operating. Maintain a safe distance from the moving parts.

Do not handle objects, detergents, etc. near the machine while it is operating.



## OENOLOGICAL ELECTROPUMPS

---

**ATTENTION DANGER:** 

Inspection, lubrication, adjustment and maintenance must be performed with the machine stopped and the power off.

**ATTENTION DANGER:** 

During performance of repairs, the safety devices can be disconnected only by specialized personnel, who shall pay utmost attention to avoid injury to people or damage to the machine.

### PRECAUTIONS TO BE FOLLOWED WHEN PERFORMING INTERVENTIONS ON THE HOPPER:

- ◆ Apply a warning plate on the control board managing the hopper
- ◆ All repairs must be performed by specialized personnel under the guide of the chief operator.
- ◆ After disconnecting the power, insure the power cannot be connected inadvertently.
- ◆ Ensure the power is disconnected before making any interventions on the electrical. Connect a ground wire to ensure the machine is fully discharged to ground.
- ◆ Do not allow people unfamiliar with the operation of the machine to be near the machine.
- ◆ **Do not clean the electrical components with water or other fluids.**

**ATTENTION:** 



Use acids, aggressive detergents, lye, etc, cautiously during cleaning. Follow scrupulously the instructions of the producer of cleaners. Use protective clothes, like glasses, gloves, overalls, etc.

**ATTENTION DANGER:** 

If there are more than one person performing repairs or maintenance, it is obligatory to warn them before starting the machine.



## OENOLOGICAL ELECTROPUMPS

---

### **AT THE END OF MAINTENANCE OR REPAIR, BEFORE STARTING UP THE MACHINE:**

The chief operator of the machine will check that all repairs/maintenance have been finished, all safety devices are installed correctly, and people who are not operators of the machine, have been sent away.

### **6 MONTH INSPECTION:**

Check all safety devices.

### **YEARLY INSPECTION:**

The hopper must undergo a yearly inspection performed by a qualified maintenance worker to check that all safety guards are operational and the various parts of the machine are in good condition. After the inspection, apply a label to the machine indicating that the inspection has been performed.

### **GENERAL ANNOTATION:**

For any maintenance and repair employ exclusively **SPECIALIZED PERSONNEL** or contact the "AFTER SALE SERVICE G. REVELLO".

### **ATTENTION:**

"G. REVELLO" does not guarantee the results of the repairs and declines any responsibility for damages in case said works have not been performed by its personnel.

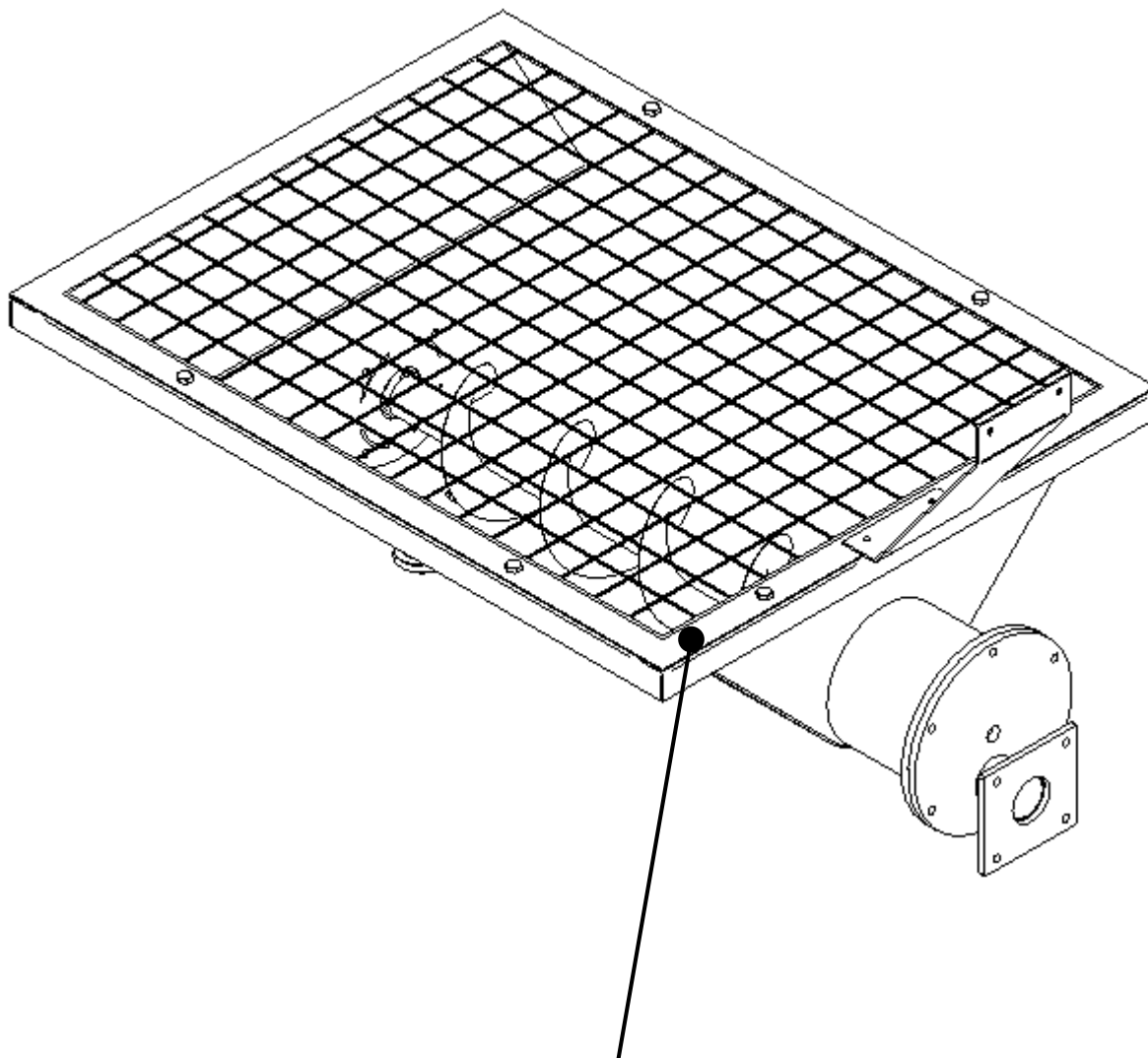
*As far as reasonably tested we state that our machines have been designed and manufactured for safety and to be used without any risks for the health if used correctly.  
Provided that the instructions of this manual are observed scrupulously, we cannot foresee all possible situations where our machines can represent risks for the health and the safety.  
In case of doubts concerning the suitability of the hopper for the intended application, it is advisable to contact **G. REVELLO** with the serial number of the machine.*

### **DECALS OF DANGER AND ATTENTION:**

The following pages show the various decals that you can find on the machines.

### **ATTENTION:**

The content of the decals can vary depending on special needs.



**THIS SAFETY GUARD OF MECHANICAL TYPE CAN ONLY BE REMOVED BY AUTHORIZED SPECIALIZED PERSONNEL WITH THE AID OF MECHANICAL TOOLS.**

**BEFORE REMOVING THE SAFETY GUARDS IT IS OBLIGATORY TO DISCONNECT THE POWER AND ACTIVATE THE EMERGENCY STOP BUTTON ON PUMP CONTROL BOARD.**

**IT IS STRICTLY FORBIDDEN TO REMOVE THE SAFETY GUARD WITH THE MACHINE IN OPERATION OR TO START THE MACHINE WITHOUT THE SAFETY GUARD.**





*OENOLOGICAL ELECTROPUMPS*

---

***CHAPTER TWO***  
***IDENTIFICATION***



## OENOLOGICAL ELECTROPUMPS



Every hopper bears an identification plate with clear and indelible data of the machine.

Via Stazione, 18 - S.STEFANO BELBO (CN) - ITALY Tel. 0141 844129 - Fax 0141 843211			
1	MODEL	<input type="text"/>	
3	SERIAL NR	Q.max.: GPM	<input type="text"/>
5	YEAR	Q.min.: GPM	<input type="text"/>
		VOLTS	<input type="text"/>
			2
			4
			6

- 1) MODEL OF THE ELECTROPUMP
- 2) MAXIMUM DELIVERY
- 3) SERIAL NUMBER
- 4) MINIMUM DELIVERY
- 5) YEAR
- 6) TENSION (VOLTAGE)



*OENOLOGICAL ELECTROPUMPS*

---

***CHAPTER THREE  
INFORMATION***



## OENOLOGICAL ELECTROPUMPS

---

### ▶▶ NOISE

The machine does not emit any noise above the critical threshold.

### ▶▶ DISPOSAL OF WASTE

While performing its working cycle the machine does not produce any waste.

### ▶▶ INFORMATION ABOUT DEMOLITION

The machine is manufactured of stainless steel and other ferrous and non-ferrous alloys. Elements of plastic material are mainly the cables for electrical supply, the components of the electrical system, and the box containing them. Elements in plastic material are mainly the feed cables, the support bushes of the screw. A quantity of oil for lubrication is inside the reducer. **We remind the user of the electro-pump that all material must be disposed in compliance with the norms and regulations in force in the country of the user.**

### ▶▶ INFORMATION ABOUT STORAGE

We recommend cleaning the hopper thoroughly and cover it adequately. Keep the machine in dry rooms, well insulated from the external environment, so that it is not exposed to the effects of weather such as dust, water, changes of temperature that could accelerate the aging process of plastic materials. For periods of storage over 60 days protect the coupling surfaces with suitable antioxidant products.

### ▶▶ WARRANTY

The manufacturer guarantees that his/her products are free from defects in the material and workmanship for a period of one year from the date of delivery, under normal conditions of maintenance and use. The commitments and obligations deriving from this warranty are limited to the mere substitution and/or repair of the part or parts that after inspection are determined to be defective as to material or workmanship provided that they have not been altered in any way and have not been subject to improper use, negligence, or accident.

**The labour costs for repairs or substitution of the defective parts and the transport costs are not included in the warranty.**

**No warranty made by anyone other than the manufacturer will be regarded as valid and binding.**

The manufacturer reserves the right to modify his machines at any moment and without previous notice, in that case the manufacturer shall not be obliged to perform any changes in machines produced before. Upon delivery, check that the machine and its accessories, if any, have not been damaged during transport. Claims shall be presented in writing **within 6 (six) days**. The purchaser can exert his/her rights on the warranty only if he/she has observed the necessary conditions for its validity mentioned in the delivery contract.



## OENOLOGICAL ELECTROPUMPS

---

### ▶▶ LAPSE OF THE WARRANTY

#### The warranty lapses:

- 1) In case of improper operation of the hopper
- 2) When, due to repairs performed by the customer without the authorisation of "**G. REVELLO**" and to the use of non-original spare parts, the machine is damaged by cause of said repairs.
- 3) In the event that the user does not follow the instructions of this manual.



*OENOLOGICAL ELECTROPUMPS*

---

***CHAPTER FOUR  
CHARACTERISTICS***



**OENOLOGICAL ELECTROPUMPS**

---

**TECHNICAL DATA SHEET**

<b>HOPPER MODEL</b>	<b>T 300</b>
<b>SERIAL NUMBER</b>	<b>03/10U</b>
<b>WEIGHT</b>	<b>Kg.</b> 75
<b>ELECTRIC MOTOR</b>	<b>Kw.</b> 0,37
<b>SUPPLY</b>	<b>Volt</b> 230 – single phase
	<b>Hz</b> 60

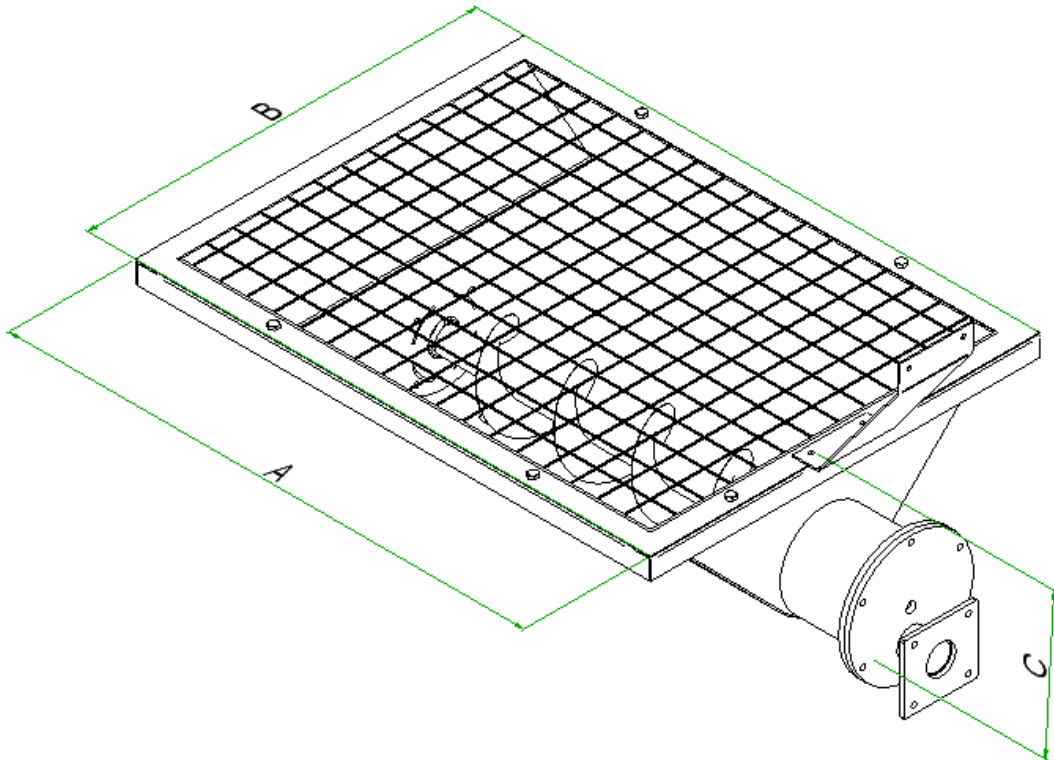
**ATTENTION:**

The hopper is suitable only to feed "G.REVELLO" peristaltic pumps and is used only to dose grapes and removing the grapes from the stalks.

The present hopper consists of a screw and a motor reducer controlling its rotation. The controls of the hopper are located on the switchboard of the machine.

In the machine the screw performs the task of spacing and transferring the product to the suction mouth of the pump.

**OENOLOGICAL ELECTROPUMPS**



HOPPER MODEL	A (mm)	B (mm)	C (mm)
T 150	1000	750	390
T 300	1100	750	410



*OENOLOGICAL ELECTROPUMPS*

---

***CHAPTER FIVE***  
***DISPLACEMENT, TRANSPORT, INSTALLATION***



## OENOLOGICAL ELECTROPUMPS

---

The transport of the hoppers can be made as follows:

- ◆ **WITHOUT PACKING.** The hoppers are transported on trucks, protected only with cellophane and blocked with wooden wedges and beams nailed to the platform of the truck.
- ◆ **IN WOODEN CRATE.** In this case the machines are protected with cellophane and closed in wooden crates having a pallet as a base. The hopper is fixed to the pallet with wooden beams and fastened (on the pallet) with iron brackets fixed with screws.
- ◆ **ON WOODEN PALLET.** The machines are fixed with wooden beams and fastened (on the pallet) with iron brackets fixed with screws. The overall dimensions of the hoppers are smaller than the dimensions of a pallet

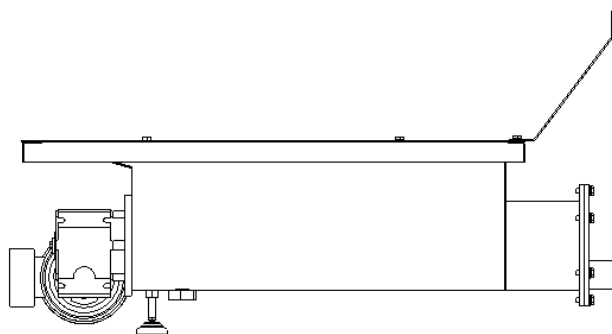
**ATTENTION:** 

- ◆ When without packing the hoppers must be lifted by means of approved belts in compliance with the safety norms; besides they must a suitable capacity for the weight of the frame to be lifted.
- ◆ The hopper packed in wooden crates or on pallet must be loaded or unloaded from the transport with the aid of a fork lift.
- ◆ The hoppers on pallets or in cages can be lifted only **after the load has been perfectly balanced on the forks of the forklift.**
- ◆ **"G. REVELLO"** declines **any responsibility for damages due to accidents caused by improper balancing of the load on the forks of the forklift.**
- ◆ The hopper must be in an enclosed delivery truck **to avoid damaging the electrical components of the machine** in case of rain, snow, or bad weather.
- ◆ **Not perfect load balancing** (the machine with or without packing must always be in horizontal position) creates a situation of **great hazard** for the operators.

The materials used for the packing are recyclable.

## OENOLOGICAL ELECTROPUMPS

- + The hopper must be inspected upon delivery for any damage or missing parts. In addition, the customer must check all boxes or parcels containing spare parts or accessories packed with the hopper.
- + After removing the packing (when present) position the hopper near the working area, close to the G. REVELLO pump.
- + The installation must be made on a level floor sufficiently rigid to support the weight of the electro-pump with hopper and the additional weight of the product and hoses.
- + After being fixed to the G. Revello peristaltic pump, the support foot must be adjusted.



- + The positioning of the machine with the hopper must allow the access to the parts subject to routine and extraordinary maintenance.
- + The best operation of the hopper for the peristaltic pumps is obtained with a connection to the process so that the product falls in the segment of the screw farthest from the pump.

+ **ATTENTION:** 

The installation is to be performed exclusively by coupling the hopper to the model of pump adopted.

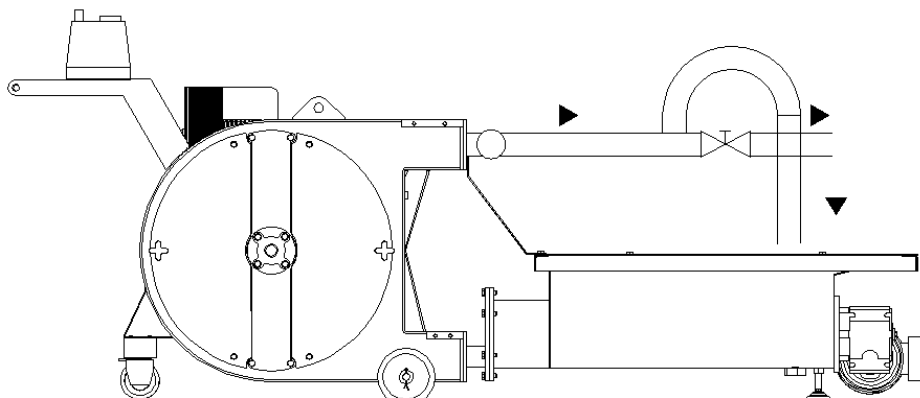
Since the driving parts moving the product are very dangerous, during the installation it is necessary to follow all prescription for the protection of the operators.

In the realization of the specific safety guards comply with the norms in force.

- + After connecting the hopper to the pump it is necessary to substitute the delivery hoses. The internal diameter of the suction and delivery hoses must be 20-30% bigger than that of the hose of the electro-pump. In case there are bends in these hoses, it is advisable for the bend to have a minimum radius at least 3 times as big as the diameter of the hose. This also ensures longer life of the hose of the electro-pump.

## OENOLOGICAL ELECTROPUMPS

---



- + If a gate or valve is used, it is advisable to have a by-pass.

### ▶▶ ... ELECTRICAL CONNECTION

#### ATTENTION DANGER:



Repairs or maintenance of the electrical system can be performed only by **SPECIALIZED ELECTRICIANS**, who have been instructed about the safety and accident prevention norms and the technical characteristics of the machine.

The works on the electrical parts must be performed with the machine stopped and disconnected from the electrical network.

**ATTENTION:** Check that the tension of the switchboard of the pump corresponds to the tension of the motor of the hopper.

The electrical connection is made by inserting the plug on the cable of the hopper into the outlet on the body of the electro-pump. The power and stop controls are those of the pump-

The whole electrical installation to which the machine is connected must be in compliance to the prescriptions of the norms in force.



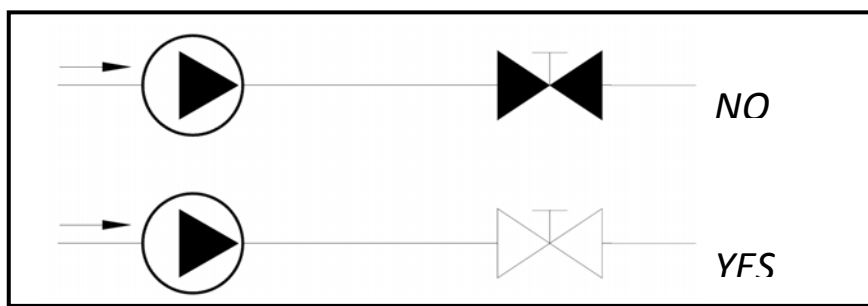
*OENOLOGICAL ELECTROPUMPS*

---

***CHAPTER SIX***  
***USE OF THE MACHINE***

### ▶▶ **BEFORE STARTING THE HOPPER MAKE SURE THAT:**

- 1) The machine is in its position of use
- 2) Block the wheels of the pump and level the hopper by means of the support foot
- 3) Before starting the machine make sure that the oil of the reducer reaches the desired level
- 4) The tension tot he switchboard of the pump corresponds tot h tension of the motor of the equipment
- 5) Make sure that the mechanical safety guard has been properly installed.



- 6) Check that all delivery hoses are properly connected.
- 7) Check that the valve on the outlet pipe (when installed) **IS OPEN**
- 8) Check that the optional electrical components, if any, are connected to the control board and that all electrical controls are in stop position.
- 9) Connect the machine to the electrical network acting in compliance with the norms in force
- 10) Put the switch of the pump in start position
- 11) Start the rotation of the pump operating the control board of the inverter (variable speed drive) checking that the direction of rotation produces suction from the hopper
- 12) Rotate the switch of the hopper into the start position
- 13) Check the direction of rotation of the screw corresponds to that of the sucking of the pump
- 14) Adjust the speed of the pump to that of the hopper



## OENOLOGICAL ELECTROPUMPS

---

### ▶▶ **MACHINE STOP**

- 1) Adjust the speed of the pump to that of the hopper
- 2) The hopper is stopped through its switch
- 3) The stop is achieved by resetting the pump the control board of the inverter, then reset the switch on the control board
- 4) Disconnect the machine to the electrical network
- 5) The hopper is equipped with a discharge cap for its complete discharge

### ▶▶ **EMERGENCY STOP**

- 1) In emergency act on the emergency button
- 2) Perform the locking device described in the "MACHINE STOP"
- 3) Check the cause which led to an emergency stop
- 4) Only the security administrator can reset the emergency button (rotate) only after reporting the machine in safety



## OENOLOGICAL ELECTROPUMPS

---

### ▶▶ **INCONVENIENCES**

This section supplies some information about the problems that can arise during the use of the machine; besides, it lists some possible causes for its malfunction and the possible remedies to solve such problems

#### ➡ **ACTIONS TO BE AVOIDED**

- + At the end of the work do not leave the machine full of product.
- + do not increase the value of the overheat or overload of the motor beyond the limits mentioned in the rating plate, in case of motor with insufficient performance check the data and contact the technical service of "G.Revello"
- + when washing the machine with a jet of water, to not send it directly on the motor and on the electrical equipments.
- + Using unsuitable lubricant
- + Too high temperature of the product
- + Worn bearing
- + Wrong or non optimal adjustment of the roller that would exert too strong pressure on the hose, to vary the pressure of the rollers read the operation and maintenance manual of the peristaltic pump.
- + Too high speed of the electro-pump.

#### ➡ **CAPACITY-PRESSURE**

The capacity or the delivery pressure of the electro-pump can be lower than the rated values due to:

- + valves on the delivery hose closed
- + in case the product stops sticking on the walls of the hopper preventing correct feeding and the pump does not prime, stop the pump and remove the obstruction.

In case of low performance and in case of accumulation of the product near the inlet of the pump, load the product in the farthest part.

- + Breakage of the hose, in the case the body of the pump would be filled with the product conveyed.
- + Obstructions in the suction due to foreign bodies can generate noise and beats inside the pump, to find the cause we recommend making the pump and the hopper rotate backwards.

### ▶▶ **RESIDUAL HAZARDS**

- ▶▶ The use of the movable pump with feeding hopper and the need for mouths of big dimensions to take the product can cause residual hazards for the accessibility to dangerous zones.

Said residual risks can be eliminated following the instructions of the operators, performing maintenance checks of the safety and signalling the dangers with suitable warning plates as described above.



*OENOLOGICAL ELECTROPUMPS*

---

***CHAPTER SEVEN***  
***PERIODICAL INSPECTIONS AND MAINTENANCE***



## OENOLOGICAL ELECTROPUMPS

### ▶▶ MAINTENANCE PROGRAM

The best performance, lower operating costs, and the longest life of the hopper can be obtained with accurate inspections and a maintenance program.

The procedures described in this manual do not substitute for the experience of our technical staff.

**ATTENTION:** 

**Any intervention on the hopper must be performed with the machine stopped and disconnected from the electrical network.**

- + With a routine inspection check the operation, making sure that the noise, the vibrations and the temperature of the bearing of the motor remain within the normal values.
- + If the performance of the electro-pump does not meet the requirements and the requirements have not been modified, check the parts for wear.
- + Check that there is no anomalous leakage of the liquid being conveyed.
- + With a periodical inspection check the wear of the bushes supporting the screw, the sealing rings on the reducer side.
- + At the end of the work the product must be discharged from the hopper, because, since the product is semi-solid, it tends to solidify and to leave deposits.
- + If the machine does not work for a period over one month, it is advisable to perform the lubrication of the points indicated.

### ▶▶ OIL IN THE REDUCER

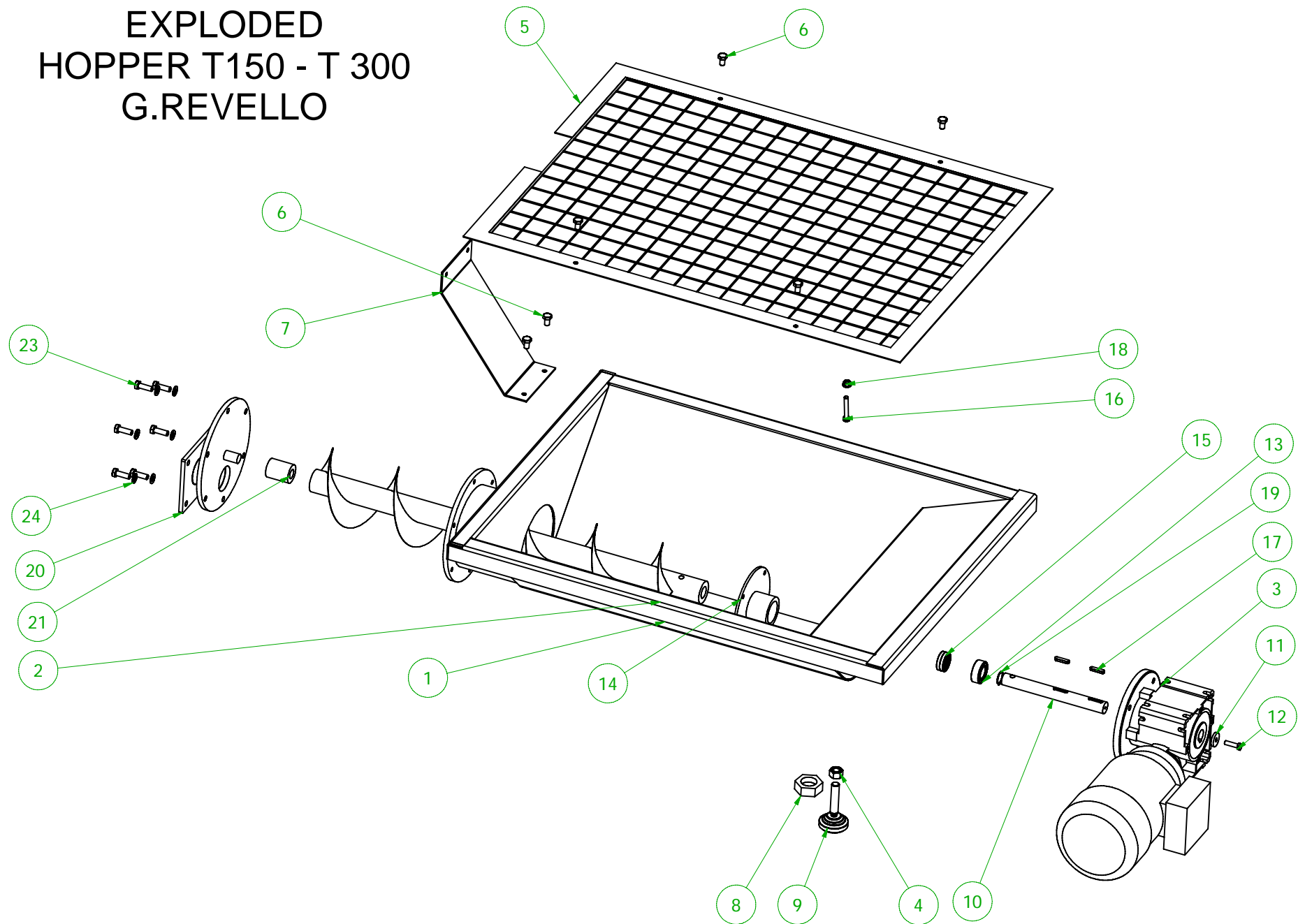
CHECK THE LEVEL OF THE OIL IN THE REDUCER PERIODICALLY; if necessary, fill it up. Change the oil completely after **two thousand hours**.

### ▶▶ DISASSEMBLY AND RE-ASSEMBLY

**ATTENTION!!!**   

- + The pump may have pumped dangerous and toxic liquids; therefore, it is essential to wear skin and eye protection.
- + The liquid must be collected and disposed of in compliance with the environmental laws in force
- + In case the machine is returned to the factory for complete overhaul, in case it has conveyed toxic or aggressive liquids, it must first undergo a scrupulous decontamination by the customer.

# EXPLODED HOPPER T150 - T 300 G.REVELLO



# CATALOGO RICAMBI TRAMOGGIA

SPARE PARTS OF HOPPER  
DISTINCTS ARTICLES DE TREMIE

POS.	DESCRIZIONE	DESCRIPTION	T 150	T 300
1	Corpo tramoggia	Hopper body	T 150.100	T 300.100
2	Coclea con albero	Screw with shaft	T 150.105	T 300.105
3	Motoriduttore	Gearmotor	T 150.110	T 300.110
4	Dado inox	Nut	T 150.115	T 300.115
5	Griglia di protezione	Safety guard	T 150.120	T 300.120
6	Vite inox	Stainless steel bolt	T 150.125	T 300.125
7	Staffa supporto	Support braket	T 150.130	T 300.130
8	Tappo	Stopper	T 150.135	T 300.135
9	Piede regolabile	Adjustable foot	T 150.140	T 300.140
10	Albero motore	Shaft	T 150.010	T 300.010
11	Rondella inox	Stainless steel washer	T 150.145	T 300.145
12	Vite inox	Stainless steel bolt	T 150.150	T 300.150
13	Cuscinetto	Radial ball bearing	T 150.155	T 300.155
14	Boccola di supporto	Support bush	T 150.005	T 300.005
15	Anelli di tenuta	Simmering	T 150.160	T 300.160
16	Vite inox	Stainless steel bolt	T 150.165	T 300.165
17	Chiavetta	Key lock	T 150.170	T 300.170
18	Dado inox	Nut	T 150.175	T 300.175
19	Seeger	Seeger	T 150.180	T 300.180
20	Supporto per fissaggio pompa	Pump fixation support	T 150.185	T 300.185
21	Boccola nylon	Nylon bush	T 150.006	T 300.006
22	O.Ring	O.Ring	T 150.190	T 300.190
23	Vite inox	Stainless steel bolt	T 150.195	T 300.195
24	Rondella inox	Stainless steel washer	T 150.200	T 300.200
25	Vite inox	Stainless steel bolt	T 150.205	T 300.205



Revello Giovanni via Stazione 18, 12058 S. Stefano Belbo (CN) ITALIA

Tel +39 0141844129 Fax +39 0141843211 e-mail : info@revellogiovanni.com